

Simple Solutions for the Sign Industry

Spring 2015 | North America
Web



Nearly 60 Years of Lighting Excellence

The Sloan Company was founded in 1957 to design and develop high-reliability lighting products for the aerospace and automotive industries. By the early 1970s, the Sloan Company became the pacesetter in LED technology and the transition to SloanLED® was realized.

Today, as our name implies, LEDs are what we do and we are committed to providing quality LED systems to the sign industry.

The SloanLED Advantage

Innovation

- Bright, vivid signs and perimeter/accent lighting
- Easy to install
- Reliable and dependable products
- Consistent color and intensity
- Reduced maintenance costs
- Lowest total cost of ownership

Reliability

- Virtually maintenance free
- Proprietary weatherproof coating
- Extremely long life, up to 100,000 hours
- Extreme environmental and product-life testing

Environmentally friendly

- Significant energy cost savings
- Standardized low-voltage systems
- RoHS compliant
- Recycled/recyclable packing materials
- Mercury free illumination
- Compatible with solar solutions

Quality

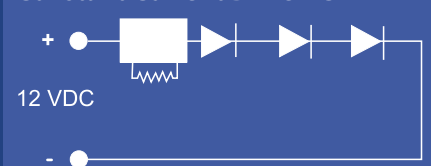
- ISO 9001: 2008 certification for quality management
- LM79 product testing
- TUV, UL, cUL, CE, and ETL approved
- Experienced and proven industry leader

SloanLED

Why SloanLED Uses Constant Current Technology

- Maintains consistent current levels
- Eliminates current change due to forward voltage variation
- Provides uniform light output throughout the entire installation
- Prevents damage from over-driving of LEDs
- Allows modules to be wired in parallel or series without complicated load balancing

Constant Current Driver IC



Solutions-based Products for every signage application

White Channel Letter Products

The chart below breaks down the SloanLED white product line by can depth and Kelvin temperature.

White	Temperature	Desired can depth						
		2 inch	3 inch	4 inch	5 inch	6 inch	7 inch	8 inch
Strip								
BendLUX	6500 K							
Modules								
V180 Mini	6500 K							
V180 Standard	7200 K, 6500 K, 5000 K, 4000 K, 3000 K							
V180 Large	6500 K, 5000 K							
VL Plus 2 Mini	6500 K							
VL Plus 2 Short	7200 K, 6500 K, 5000 K, 4000 K, 3000 K							
VL Plus 2 HB Short	6500 K							
VL Plus 2 Long	6500 K							
Great White 4	6500 K							

Optimal Acceptable Testing required

Cabinet/Box Lighting

Product	Description
SignBOX™ RapidStick™*	Ideal for rapid retrofits of single and double-sided fluorescent cabinets (typically 8 inches from sign face)
SignBOX™ II	Ideal for single or double-sided new cabinets or retrofits as close as 5 inches from sign face
PosterBOX™	Side illuminated lighting for shallow to standard cabinets 4 to 8 inches in depth
PosterBOX™ Slim 2	Side illuminated lighting for slim or shallow cabinets as narrow as 2 inches in depth (single-sided) or 4 inches in depth (double-sided)

Architectural Lighting

Product	Description
Fluorescent Alternative	
SlimLINER	Interior and exterior illumination for awnings, vinyl canopies, and accents in narrow applications
HighLINER 2*	Interior and exterior illumination for soffits, awnings, and wall washes
Border Tubing	
LEDStripe*	Rigid tubing that is ultra bright, large profile, and high impact, with a daytime color when non-illuminated
FlexiBRITE	Flexible tubing that is pre-assembled/sealed, field cuttable, and field bendable without heating
ColorLINE	Neon inspired tubing with high brightness, low power consumption, and is field cuttable

* Uses 100 W 24 VDC power supply; all other products use 60 W 12 VDC power supplies

Simple Solution

for channel letter lighting



VL Plus family



VL Plus 2 Whites

Everyday standard face lit solutions



- VL Plus 2 is 25% brighter than VL Plus
- **NEW** VL Plus 2 HB Short is 28% brighter than VL Plus 2 Short
- Short available in 5 shades of white
- Constant Current Technology
- UL and cUL Recognized, CE, CSA Certified, RoHS, and WEEE compliant

Specifications

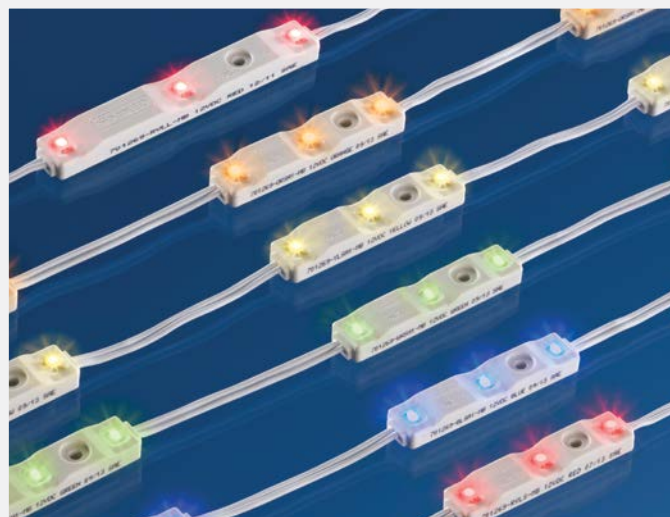
Dimensions L x W x H	Long	3.45 in x 0.49 in x 0.35 in
	Short	2.35 in x 0.49 in x 0.35 in
	Mini	1.33 in x 0.44 in x 0.35 in
Viewing angle		120°
LEDs per module	Long/Short	3
	Mini	2
Modules per foot	Long	2
	Short	2.5
	Mini	4
Maximum coverage per row	Can depth	Row coverage
	5 in	5 in
Operating temperature	-40° C to +70° C	
Power per module	Long/Short	0.54 W
	Mini	0.42 W
Efficacy	Long/Short	93 lm/W
	HB Short	119 lm/W
	Mini	60 lm/W
Power supply	SloanLED 12 VDC	
Fastening	Peel-n-stick and mechanical	
Packaging	5 trays per carton	
	Long	50 modules per tray
	Short	75 modules per tray
	Mini	100 modules per tray

Item description	Part number	Lumens per module (nominal)
White Long (6500 K)	701269-6WLA2-MB	50
White Short (7200 K)	701269-7WSA2-MB	50
White Short (6500 K)	701269-6WSA2-MB	50
White Short (5000 K)	701269-5WSA2-MB	50
White Short (4000 K)	701269-4WSA2-MB	50
White Short (3000 K)	701269-3WSA2-MB	50
White HB Short (6500 K)	701269-6WHA1-MB	64
White Mini (6500 K)	701269-6WMA2-MB	25

VL Plus Colors

Everyday standard face lit solutions

- Two red sizes: Long and Short
- Short available in 5 colors
- Constant Current Technology
- UL and cUL Recognized, CE, CSA Certified
- RoHS and WEEE compliant



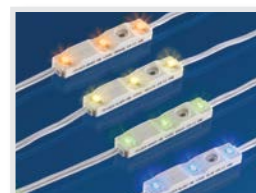
Red



Specifications

Dimensions L x W x H	Long	3.45 in x 0.49 in x 0.37 in
	Short	2.35 in x 0.49 in x 0.37 in
Viewing angle	120°	
LEDs per module	3	
Modules per foot	Long	2
	Short	2.5
Maximum coverage per row	Can depth	Row coverage
	5 in	5 in
Operating temperature	-40° C to +70° C	
Power per module	Long	0.36 W
	Short	0.29 W
Efficacy	Long/Short	31 lm/W
Power supply	SloanLED 12 VDC	
Fastening	Peel-n-stick and mechanical	
Packaging	5 trays per carton	
	Long	50 modules per tray
	Short	75 modules per tray

Orange, Yellow, Green, and Blue



Specifications

Dimensions L x W x H	2.35 in x 0.49 in x 0.37 in	
Viewing angle	120°	
LEDs per module	3	
Modules per foot	2.5	
Maximum coverage per row	Can depth	Row coverage
	5 in	5 in
Operating temperature	-40° C to +70° C	
Power per module	Orange, Yellow	0.29 W
	Green, Blue	0.36 W
Efficacy	Orange	45 lm/W
	Yellow	28 lm/W
	Green	86 lm/W
	Blue	25 lm/W
Power supply	SloanLED 12 VDC	
Fastening	Peel-n-stick and mechanical	
Packaging	5 trays per carton	
	75 modules per tray	

Item description	Part number	Lumens per module (nominal)
Red Long (625 nm)	701269-RVLL-MB	11
Red Short (625 nm)	701269-RVLS-MB	9

Item description	Part number	Lumens per module (nominal)
Orange Short (610 nm)	701269-ORSA1-MB	13
Yellow Short (590 nm)	701269-YLSA1-MB	8
Green Short (528 nm)	701269-GRSA1-MB	31
Blue Short (470 nm)	701269-BLSA1-MB	9

V180

Revolutionary 180° LED modules

- **NEW** V180 Large is now brighter
- Use less modules for better illumination
- Standard available in 5 shades of white
- Versatile low-profile modules
- Constant Current Technology
- UL and cUL Recognized, CE, CSA Certified
- RoHS and WEEE compliant

Large, Standard, and Mini



Specifications

Dimensions L x W x H	Large	1.76 in x 0.95 in x 0.38 in	
	Standard	1.63 in x 0.80 in x 0.31 in	
	Mini	1.24 in x 0.50 in x 0.34 in	
Viewing angle	180°		
LEDs per module	3		
Modules per foot	Size	Natural	Stretched
	Large	2	1
	Standard	2.5	2
	Mini	2.5	N/A
Maximum coverage per row	Can depth	Row coverage	
Large	5 in	10 in	
Standard	5 in	8 in	
Mini	3 in	4 in	
Operating temperature	-40° C to +70° C		
Special feature	Wire stretch feature available on Large and Standard		
Power per module	Large	1.20 W	
	Standard	0.55 W	
	Mini	0.31 W	
Efficacy	Large	117 lm/W	
	Standard	90 lm/W	
	Mini	103 lm/W	
Power supply	SloanLED 12 VDC		
Fastening	Peel-n-stick and mechanical		
Packaging	5 trays per carton		
	Large	35 modules per tray	
	Standard	62 modules per tray	
	Mini	75 modules per tray	

LARGE NOW BRIGHTER



Channel Letter Lighting



Item description	Part number	Lumens per module (nominal)
Large (6500 K)	701269-6WLG2-MB	140
Large (5000 K)	701269-5WLG2-MB	140
Standard (7200 K)	701269-7WSG1-MB	50
Standard (6500 K)	701269-6WSG1-MB	50
Standard (5000 K)	701269-5WSG1-MB	50
Standard (4000 K)	701269-4WSG1-MB	50
Standard (3000 K)	701269-3WSG1-MB	50
Mini (6500 K)	701269-WLP2-MB	32

ChanneLED 5 Red

High output red



- SloanStretch expandable wire (+2 inch) feature for optimum module placement
- Run 45 feet per SloanLED 60 W 12 VDC power supply
- Constant Current Technology
- UL and cUL Recognized, CE, CSA Certified
- RoHS and WEEE compliant

Specifications

Dimensions L x W x H	4 in x 0.46 in x 0.45 in	
Viewing angle	120°	
LEDs per module	3	
Modules per foot	2	
Maximum coverage per row	Can depth	Row coverage
	≥ 5 in	7.5 in
Operating temperature	-40° C to +70° C	
Special feature	SloanStretch expandable wire (+2 in)	
Power per module	0.60 W	
Efficacy	30 lm/W	
Power supply	SloanLED 12 VDC	
Fastening	Peel-n-stick and mechanical	
Packaging	5 trays per carton 50 modules per tray	

Item description	Part number	Lumens per module (nominal)
Red (625 nm)	701269-R5-MB	18

Great White 4

High output white



- Advanced high output white LED system
- Run 25 feet per SloanLED 60 W 12 VDC power supply
- Constant Current Technology
- UL and cUL Recognized, CE, CSA Certified
- RoHS and WEEE compliant

Specifications

Dimensions L x W x H	3.16 in x 0.50 in x 0.36 in	
Viewing angle	120°	
LEDs per module	6	
Modules per foot	2	
Maximum coverage per row	Can depth	Row coverage
	5 in to <8 in	5 in
	≥8 in	8 in
Operating temperature	-40° C to +70° C	
Power per module	1.08 W	
Efficacy	90 lm/W	
Power supply	SloanLED 12 VDC	
Fastening	Peel-n-stick and mechanical	
Packaging	5 trays per carton 50 modules per tray	

Item description	Part number	Lumens per module (nominal)
Great White 4 (6500 K)	701269-WL4-MB	98

Simple Solution

for block acrylic letters

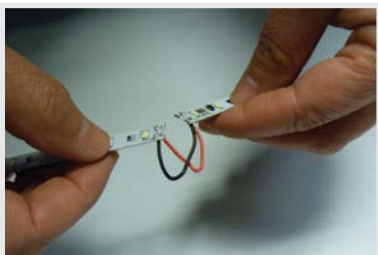
Channel Letter Lighting



BendLUX

Low-profile, flexible strip lighting

- Bendable in both flat and radial directions
- Low-profile illumination for solid acrylic block letters, narrow and shallow channel letters, and back lit halo letters
- Snappable every 1.7 inches with jumpers in place for easy flat bends and connections
- Constant Current Technology
- UL and cUL Recognized, CE, CSA Certified
- RoHS and WEEE compliant



Snap modules and stretch wire for additional flexibility

Specifications

Dimensions L x W x H	24 in x 0.30 in x 0.10 in
Viewing angle	120°
LEDs per section	3
Nominal color temperature	6500 K
Minimum radial bend radius	1 in
Operating temperature	-40° C to +70° C
Special features	Snappable every 1.7 inches, Jumpers between sections for easy flat bends and connections
Power	0.3 W per section, 4.2 W per strip
Efficacy	85 lm/W
Power supply	SloanLED 12 VDC
Fastening	Peel-n-stick
Packaging	12 strips per box

Item description	Part number	Lumens per strip (nominal)
BendLUX (6500 K)	701960-6WS241	365

Simple Solution

for retrofitting sign cabinets



SignBOX RapidStick

for quick, efficient fluorescent replacement



SignBOX RapidStick

Single or double-sided cabinets



- Bright, even 360-degree illumination
- Fast and easy installation using existing sockets
- Illuminates 8 inches from face
- High efficiency and long life
- UL and cUL Recognized
- RoHS and WEEE compliant

Specifications

Dimensions L × W × H	48 in	45.7 in × 2.0 in × 2.0 in
	72 in	69.7 in × 2.0 in × 2.0 in
	96 in	93.7 in × 2.0 in × 2.0 in
Viewing angle	360°	
LEDs per lamp	48 in	48
	72 in	76
	96 in	104
Operating temperature	-40° C to +70° C	
Special feature	360-degree illumination	
Power per lamp	48 in	19.1 W
	72 in	28.9 W
	96 in	41.2 W
Efficacy	48 in	131 lm/W
	72 in	138 lm/W
	96 in	134 lm/W
Power supply	SloanLED 24 VDC	
Fastening	Fluorescent lampholders	
Packaging	48 in	16
	72 in	12
	96 in	8

Item description	Part number	Lumens per lamp (nominal)
RapidStick (6500 K) 48 in	701972-6WD481	2500
RapidStick (6500 K) 72 in	701972-6WD721	4000
RapidStick (6500 K) 96 in	701972-6WD961	5500

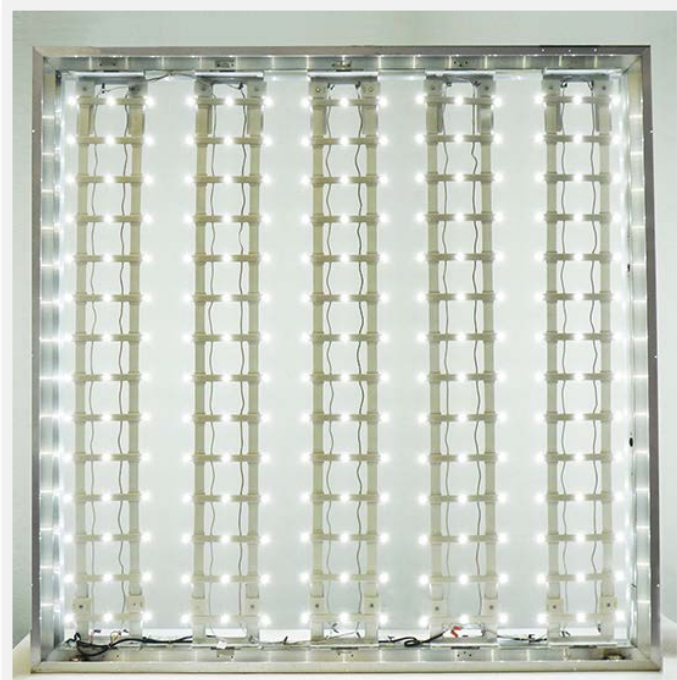
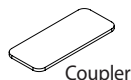
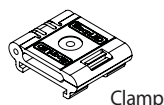
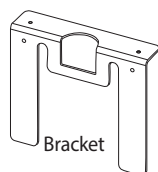
SignBOX II

Single or double-sided cabinets

- 6500 K is now 17% brighter
- Bright, even illumination for single or double-sided cabinets
- Illuminates 5 inches from face
- Mounted on flexible straps for easy installation
- UL and cUL Recognized, CE, CSA Certified
- RoHS and WEEE compliant

Specifications

Dimensions L x W x H	8.5 in x 1.0 in x 0.3 in 60 modules per 20 ft chain	
Viewing angle	120°	
LEDs per module	Single-sided	3
	Double-sided	6
Modules per foot	3	
Operating temperature	-40° C to +70° C	
Special feature	Cuttable in 4 inch increments	
Power per module	Single-sided	0.90 W
	Double-sided	1.80 W
Efficacy	6500 K	117 lm/W
	5000 K	100 lm/W
Power supply	SloanLED 12 VDC	
Fastening	Clamps with mechanical fasteners	
Packaging	60 modules per carton 16 clamps included	
Accessories	Bracket (401309), Clamp (410155), Coupler (401330)	



Item description	Part number	Lumens per module (nominal)
Single-sided (6500 K)	701946-6WS201	105
Single-sided (5000 K)	701946-5WS201	90
Double-sided (6500 K)	701946-6WD201	210
Double-sided (5000 K)	701946-5WD201	180

PosterBOX

Shallow or narrow cabinets



- Easily illuminates single or double-sided cabinets with 4-8 inch can depths
- Side mounted module
- FanFlare™ lens technology projects light in a fan pattern to evenly illuminate the sign face
- UL and cUL Recognized, CE, CSA Certified
- RoHS and WEEE compliant

Specifications (full module):

Dimensions L x W x H	8.67 in x 1.74 in x 0.92 in
LEDs per module	3
Light throw	4 ft
Operating temperature	-40° C to +70° C
Special feature	FanFlare™ lens technology
Power per module	6.7 W
Efficacy	82 lm/W
Power supply	SloanLED 12 VDC
Fastening	Peel-n-stick and mechanical
Packaging	10 modules and FlareShields™ per carton
Accessories	FlareShield (401059) for shallower applications to eliminate hot spots



FlareShield on module

Item description	Part number	Lumens per module (nominal)
PosterBOX (6500 K)	701946-CWPBM	550
PosterBOX (5000 K)	701946-NWPBM	550



PosterBOX Slim 2

Shallow cabinets



- **NEW** PosterBOX Slim 2 is 40% brighter than PosterBOX Slim
- FanFlare™ lens technology projects light in a fan pattern to evenly illuminate the sign face
- Excellent white light intensity and uniformity
- Optimal for box signs as shallow as:
 - 2 inches for single-sided
 - 4 inches for double-sided
- UL and cUL Recognized, CE, CSA Certified
- RoHS and WEEE compliant

Specifications

Dimensions L x W x H	4.87 in x 1.00 in x 0.61 in
Viewing angle	15° x 43°
LEDs per module	3
Modules per foot	2
Operating temperature	-40° C to +70° C
Special feature	FanFlare™ lens technology
Power per module	1.8 W
Efficacy	94 lm/W
Power supply	SloanLED 12 VDC
Fastening	Peel-n-stick and mechanical
Packaging	3 trays per carton 38 modules per tray

Item description	Part number	Lumens per module (nominal)
PosterBOX Slim 2 (6500 K)	701946-6WXLP2	170

Simple Solutions

for architectural details



Fluorescent Alternatives

- Add attention and definition to architectural details
- Highlight non-illuminated signs
- Illuminate canopies and awnings



Border Tubing and Accents

- Add architectural detail and enhanced visibility to buildings
- Create neon-like looks with eco-friendly LED-based tubing
- Choose from an array of colors

SlimLINER

Awnings, vinyl canopies, and accents



- SlimLINER is now 34% brighter
- Can be cut in the field
- Easy and quick to install
- Slim, lightweight, and low-profile fixture
- Illuminate awnings evenly
- UL and cUL Recognized, CE, ETL Certified
- RoHS and WEEE compliant

Specifications

Dimensions L x W x H	46 in x 0.89 in x 0.35 in
Nominal color temperature	5000 K
Color Rendering Index (CRI)	70 (nominal)
Estimated product lifetime	50,000 hours (L ₇₀)
Operating temperature	-40° C to +70° C
Special feature	Each fixture can be cut for two usable sides in 6 inch increments
Power	2.3 W per foot, 9.0 W per stick
Efficacy	108 lm/W
Power supply	SloanLED 12 VDC
Fastening	Peel-n-stick or mounting clips (401203), 4 clips included with each unit

Item description	Part number	Lumens per fixture (nominal)
SlimLINER (5000 K)	701956-5WL461	970

HighLINER 2

Soffits, awnings, and wall washes



- Easy to install
- Lightweight fixture
- Illuminate soffits evenly
- UL and cUL Recognized, CE, ETL Certified
- RoHS and WEEE compliant

Specifications

Dimensions L x W x H	4 ft	45.69 in x 2.38 in x 1.12 in
	1 ft	11.98 in x 2.38 in x 1.12 in
Nominal color temperature	5000 K	
Color Rendering Index (CRI)	80 (nominal)	
Estimated product lifetime	100,000 hours (L ₇₀)	
Operating temperature	-25° C to +50° C	
Power	4 ft	14.4 W
	1 ft	3.6 W
Power supply	SloanLED 24 VDC	
Efficacy	124 lm/W (at LED)	
Fastening	4 ft	3 mounting clips (400686) and 2 wire nut housings (400860) included
	1 ft	2 mounting clips (400686) and 2 wire nut housings (400860) included

Item description	Part number	Lumens per fixture (nominal)
HighLINER 2 4 ft (5000 K)	701912-C1I75	1792
HighLINER 2 1 ft (5000 K)	701912-L1C1I75	448

ColorLINE

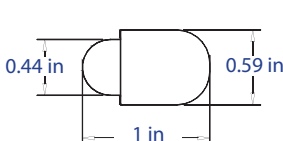
Neon-inspired tubing



- Slim profile similar to standard neon
- Neutral frosted white color when non-illuminated
- High impact acrylic: UV stable, hydrocarbon insensitive, and non-fading
- Three lit mitered corner configurations
- Convenient, weatherproof connectors between sections
- Can be cut in the field
- UL and cUL Recognized, CE Certified, ETL Listed
- RoHS and WEEE compliant

Specifications

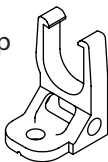
Factory bends	9.75 in radius
In-field bends	Radial bend 19 ft
	Flat bend 6 ft
Operating temperature	-40° C to +70° C
Power per foot	2.28 W
Power supply	SloanLED 12 VDC
Colors	Red, Orange, Yellow, Green, Blue, White (6500 K), Warm White (not shown)



Flat Bend



Mounting Clip
400381-25



Radial Bend



Item description	Part number	Approx. cut increments
2 ft Tube	701800-color-2	2.4 in
4 ft Tube	701800-color-4	2.4 in
6 ft Tube	701800-color-6	2.4 in
8 ft Tube	701800-color-8	2.4 in

FlexiBRITE

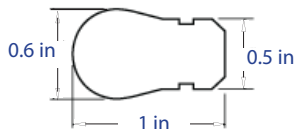
Flexible LED tubing



- Extremely flexible LED tubing
- Daytime color for red and neutral for other colors
- Optically modified silicone extrusion: UV stable, hydrocarbon insensitive, and non-fading
- Convenient mounting clips and mounting tracks
- Can be cut in the field
- UL and cUL Recognized, CE Certified
- RoHS and WEEE compliant

Specifications

In-field bends	Radial bend	12 in
	Flat bend	1 in
Operating temperature	-40° C to +70° C	
Power per foot	2.8 W	
Power supply	SloanLED 12 VDC	
Packaging	2-foot or 10-foot kit with end caps and mounting clips	



701456-10

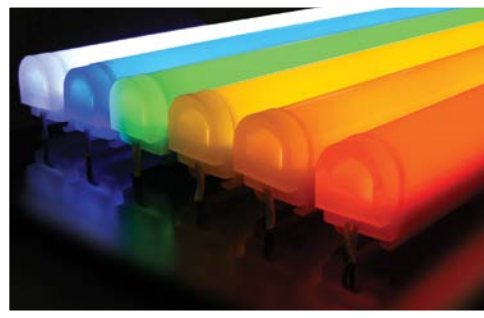
701572-25

Mounting Track and Clip

Item description	Part number	Cut increments
Red	701499-R-Size	2 in
Orange	701499-O-Size	2 in
Yellow	701499-Y-Size	2 in
Green	701499-G-Size	1 in
Blue	701499-B-Size	1 in

LEDStripe

Large-profile LED tubing

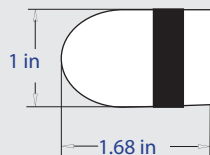


- Daytime color when non-illuminated
- High impact acrylic: UV stable, hydrocarbon insensitive, and non-fading
- Can be cut in the field
- Conforms to UL 48 Standard, CE Certified, and ETL Listed
- RoHS and WEEE compliant

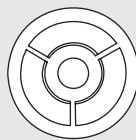
Specifications

Factory bends	12 in radius	
In-field bends	Radial bend	14 ft
	Flat bend	19 ft
Operating temperature	-40° C to +70° C	
Power per foot	1.5 W	
Colors	Red, Orange, Amber, Green, Blue, White, Lemon Yellow (with Amber daytime color)	

Power supply	SloanLED 24 VDC
---------------------	-----------------



Mounting Buttons



701156



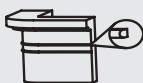
400775

Corner and Joint Covers



Outside Corner	701362-X
Inside Corner	701363-X
Step Corner	701364-X
Joint	701361-X

Radial Bend



Flat Bend



Item description	Part number	Approx. cut increments
1 ft Tube	701189-color-1	1 in
2 ft Tube	701189-color-2	3 in
4 ft Tube	701189-color-4	3 in
6 ft Tube	701189-color-6	3 in
8 ft Tube	701189-color-8	3 in
10 ft Tube	701189-color-10	3 in

LEDStripe is covered by US and foreign patents pending and covered by the following US patents issued: 6,776,504, 6,969,179, and 7,192,157

24 VDC 100 W Power Supply

HighLINER 2, LEDStripe, and SignBOX RapidStick



- IP68 (Ingress Protection) rating
- Auto-resetting
 - No fuses to replace or circuit breaker to reset
 - Short circuit protection automatically resets when short condition is corrected
- Simple secondary hook-ups – No minimum load, dip-switches, or load balancing required
- Modular, rugged, and compact design
- CE and UL Recognized for dry, damp, and wet locations
- Backward compatible with legacy SloanLED LEDStripe
- RoHS and WEEE compliant

Part number	Nominal input voltage	Max input current	Power output	Overall dimensions L x W x H
701895-24C	100-240 V	2.0 A	100 W	10.25 in x 1.73 in x 1.19 in

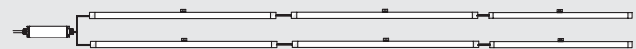
Power Supply Capacity

Item description	Maximum	Power per foot
HighLINER 2	24 ft	3.6 W
LEDStripe 24 VDC (all colors)*	60 ft	1.5 W
SignBOX RapidStick 48 in	16 ft-4 lamps	4.9 W
SignBOX RapidStick 72 in	18 ft-3 lamps	5.1 W
SignBOX RapidStick 96 in	16 ft-2 lamps	5.2 W

*Footages expressed are total (maximum 30 ft per leg).

Power Output is based on Power Supply loading of two parallel 30 ft legs.

Actual power draw may depend on loading configuration.



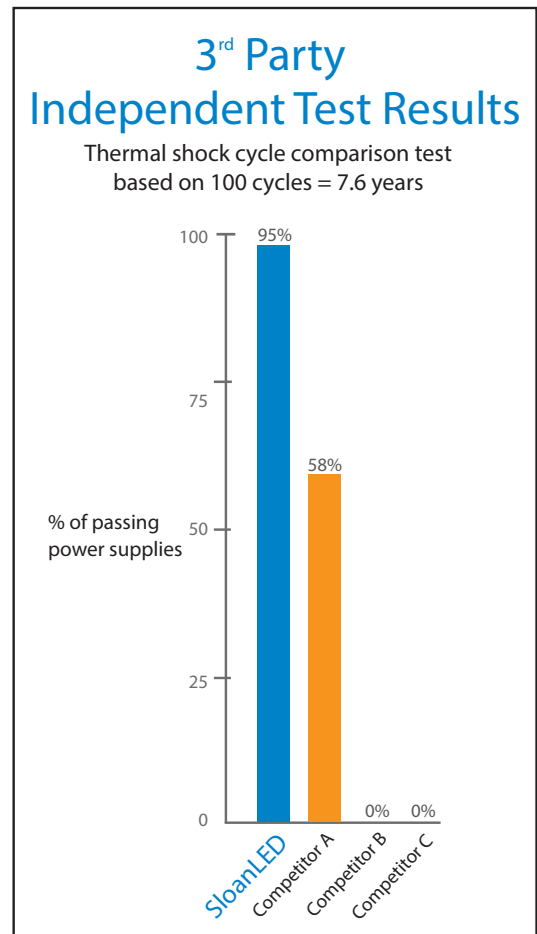
Illustrated above are two parallel 30 ft legs of LEDStripe.

12 VDC Power Supplies

MODW 60 Watt IP68 Rated



- Auto-resetting
 - No fuses to replace or circuit breaker to reset
 - Short circuit protection automatically resets when short condition is corrected
- Operating temperature -40° C to +60° C
- IP68 rating
- Modular design
 - Cluster with standard J-boxes to create multiple 60 W legs
- UL, cUL, CSA, TUV, CE certification
- UL Classified for field retrofits
- RoHS and WEEE compliant



Self-Contained 20 Watt



- Small compact size
- Operating temperature -30° C to +60° C
- UL-rated for dry and damp locations
- RoHS and WEEE compliant

“MODW units meet SloanLED’s stringent design criteria and outperformed the competition, making them best-in-class.”

Elmer Tolentino Jr., CRE
Principal Reliability Engineer
Reliant Labs

Specifications for all SloanLED 12 VDC Power Supplies

Item description	Part number	Nominal input voltage	Max. input current	Power output	Enclosure spec			Overall dimensions L x W x H
					Dry	Damp	Wet	
Self-Contained 20 W	701680	100-240 V	0.55 A	20 W	X	X		4.65 in x 1.38 in x 1.03 in
MODW 60 W	701507-MODW	100-240 V	1.0 A	60 W	X	X	X	9 in x 2.5 in x 1.5 in
MOD277 60 W	701507-MOD277	277-347 V	0.5 A	60 W	X	X	X	10.5 in x 2.5 in x 1.5 in

SloanLED power supplies carry required UL, cUL, and CSA certification
Self-Contained 20, MODW, and MOD277 also carry CE certification

Dimmer Solutions

All SloanLED 12 VDC products can be dimmed using our dimming module (701817) and either our manual Dim Control Box (701843) or approved automatic controller.

Installation Cables

SloanLED offers 18 gauge (400299-1200) and 14 gauge (400301-100) cable to make your installation easier.

12 VDC Power Supply Capacity

Maximum number of modules – based on 90% of rated capacity

SloanLED Channel Letter Products

Item description (Part number)	Power output	V180 Large	V180 Standard	V180 Mini	ChanneLED 5 Red	Great White 4	BendLUX
Modules per foot		2	2.5	2.5	2	2	2 ft strips
Self-Contained 20 W (701680)	20 W	7.5 ft/15 Mods	12.8 ft/32 Mods	22.8 ft/57 Mods	15 ft/30 Mods	8 ft/16 Mods	8 ft/4 Strips
MODW 60 W (701507-MODW) MOD277 60 W (701507-MOD277)	60 W	22.5 ft/45 Mods	39.2 ft/98 Mods	69.2 ft/173 Mods	45 ft/90 Mods	25 ft/50 Mods	25 ft/12.5 Strips
Watts per module		1.20	0.55	0.31	0.60	1.08	4.2 W per strip

Item description (Part number)	Power output	VL Plus 2 Long White	VL Plus 2 Short Whites, HB	VL Plus 2 Mini White	VL Plus Long Red	VL Plus Short Red, Yellow, Orange	VL Plus Short Blue, Green
Modules per foot		2	2.5	4	2	2.5	2.5
Self-Contained 20 W (701680)	20 W	16.7 ft/33 Mods	13.3 ft/33 Mods	10.5 ft/42 Mods	25 ft/50 Mods	24.8 ft/62 Mods	20 ft/50 Mods
MODW 60 W (701507-MODW) MOD277 60 W (701507-MOD277)	60 W	50 ft/100 Mods	40 ft/100 Mods	32 ft/128 Mods	75 ft/150 Mods	74.8 ft/187 Mods	60 ft/150 Mods
Watts per module		0.54	0.54	0.42	0.36	0.29	0.36

SloanLED Cabinet/Box Products

Item description (Part number)	Power output	PosterBOX Slim 2	PosterBOX	SignBOX II Single-sided	SignBOX II Double-sided
Modules per foot		2	N/A*	3	3
Self-Contained 20 W (701680)	20 W	5 ft/10 Mods	2 Mods	6.6 ft/20 Mods	3.3 ft/10 Mods
MODW 60 W (701507-MODW) MOD277 60 W (701507-MOD277)	60 W	15 ft/30 Mods	8 Mods	20 ft/60 Mods	10 ft/30 Mods
Watts per module		1.80	6.70	0.90	1.80

* Contact customer service for additional details.

SlimLINER, ColorLINE, and FlexiBRITE

Item description (Part number)	Power output	SlimLINER	FlexiBRITE all colors	ColorLINE all colors
		Fixtures	Maximum feet	
Self-Contained 20 W (701680)	20 W	2	6	8
MODW 60 W (701507-MODW) MOD277 60 W (701507-MOD277)	60 W	6	20	24
Power used per foot in Watts		9.02 W per fixture	2.80	2.30

NOTE: When mixing modules of different sizes/colors or various products on the same power supply, simply add all the power requirements for the respective footages of each product. Then choose appropriate power supplies to provide adequate power output. The actual number of power supplies needed may vary based on how the materials are distributed across the project.

Product Warranty

SloanLED lighting products carry a limited product warranty when used with SloanLED power supplies. Please see SloanLED warranty details on our website.

- Channel letter products: All colors are 5 years
- Box lighting products, HighLINER 2, and SlimLINER are 5 years
- Border tubing in red, orange, amber, and yellow are 5 years
- Border tubing in green, blue, whites, and lemon yellow are 3 years
- Power supplies are 5 years

Find more at SloanLED.com

- Online product estimators
- Energy saving estimators
- SloanLED overview brochure
- Eco-friendly brochure
- Photo application gallery
- Install guides and videos



SloanLED.com · info@SloanLED.com

SloanLED Corporate Headquarters
5725 Olivas Park Drive, Ventura, CA 93003
Toll-Free 888 747 4LED · Tel 805 676 3200 · Fax 805 676 3206

SloanLED Europe b.v.
Tel +31 (15) 3641569 · Europe@SloanLED.com

Connect with us:



SloanLED channel letter products are covered by US and foreign patents pending and covered by one or more of the following US patents issued: 6,932,495, 7,160,140, 7,241,031, 7,520,771, 7,931,386 and European Patent No. 175647, PosterBOX system is covered by CN200680037992.9, EP0890059, EP06812715.8, JP08-535482, NL1030161C2, US12089720 and patent pending. Green Signage, SignBOX RapidStick, SignBOX II are covered by patent pending. ColorLINE and LEDStripe system are covered by US Patent: 6,776,504, 6,969,179, 7,192,157, and patent pending and FlexiBRITE is covered by US Patent 6,776,504 and 7,213,941 European Patent No.1756471.
Specifications may change without notice. © 2015 SloanLED 000700-CAT NA REV.X Web 2015-04-15