

**Add Instant Dimension to
Your Products with the Fine
Textures of Design Boards.**

**The Value & Performance
You Expect from EnCore[®]**

Canvas Foam Boards

- Streamline the production of fine art products that demand the look of canvas or linen. No wrapping or stretching of printed images. Encore's Canvas Foam Boards fill the gap where genuine canvas stretchers and skilled labor are too costly.
- Textured surface enriches the artistic quality of photographs and painted images.
- Eliminates stretching canvas. Just print and frame or fold into a gallery wrap.
- Cuts easily by hand or machine.

**High volume cut-to-size sheets
available upon request.**

Canvas 1/4"

- Dense polystyrene foam core
- Real Artists Canvas on one side

Embossed Canvas 3/16"

- Polystyrene foam core
- Embossed Canvas on two sides

Cork Foam Board

- 3/8" thickness so push pins won't damage walls
- Cuts easily by hand or machine
- Cork on one side
- Lightweight
- Print or Paint to create Designer Cork Foam Boards
- Print Team logos for College Students or Sports Fans

Chalkboard Foam Board

- Chalk surface on one side
- 3/16" thickness
- Printable surface. Add branding, borders or personal design
- Easy to clean
- Lightweight
- Easily cut by hand or machine

Dry Erase Foam Board

- True Dry Erase surface on one side
- 3/16" thickness
- Printable surface. Add branding, borders or personal design
- Easy to clean
- Lightweight
- Easily cut by hand or machine

Extreme White for Photography

- Bright White: The higher caliber paper enhances maximum color gamut and black density of printed images
- Enhanced printing surface – good detail and smooth skin tones
- Clay-coated
- Smooth bright white paper liners
- Resilient polystyrene "memory" foam core
- Lightweight
- Easy to cut

Mixed Metals Brushed Aluminum & Brushed Gold

- Fully printable metallic paper surfaces
- End frustrations of printing on aluminum sheets or gold foils
- Dramatize and draw attention to displays and signage with a metallic tint
- Create high impact promotions and presentation items
- Partially Reflective
- Lightweight
- Easy to Cut
- Available Thicknesses: 3/16"

ENCORE[®]

PRODUCTS

ENCORE[®] Products

a division of Elmer's Products, Inc.
2020 West Front Street
Statesville, NC 28677

Customer Service: 800-873-4868

Fax: 704-871-8671

Hrs. 8:00 am – 5:00 pm (EST)

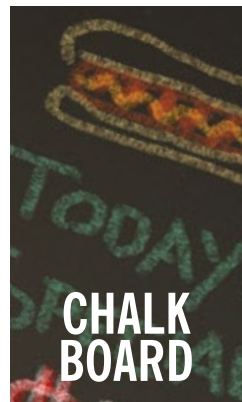
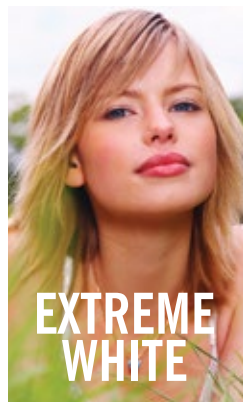
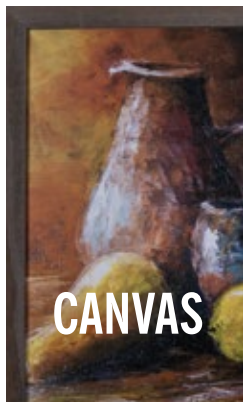
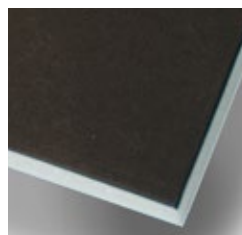
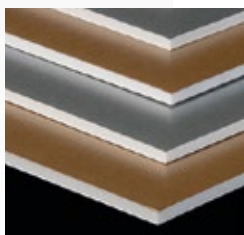
www.encoreproducts.com

www.elmers.com



EnCore[®] Design Boards

| EnCore [®] Design Boards Specifications | | | | | | |
|---|--------------------|---------------------|-----------------|--------------------|-------------------|------------------|
| Item Number | Thickness (inches) | Sheet Size (inches) | Sheets Per Case | Sq. Feet Per Sheet | Sq. Feet Per Case | Cases Per Pallet |
| Canvas Foam Boards | | | | | | |
| 960-715 | 1/4" | 24 x 36 | 12 | 6.00 | 72.00 | 50 |
| 960-710 | 1/4" | 48 x 96 | 12 | 32.00 | 384.00 | 12 |
| 905-240 | 3/16" | 48 x 96 | 25 | 32.00 | 800.00 | 15 |
| 960-241 | 3/16" | 60 x 120 | 20 | 50.00 | 1000.00 | 15 |
| Cork Foam Boards | | | | | | |
| 950-180 | 3/8" | 20 x 30 | 10 | 4.17 | 41.70 | 30 |
| 950-182 | 3/8" | 24 x 36 | 8 | 6.00 | 48.00 | 60 |
| 905-232 | 3/8" | 40 x 60 | 12 | 16.67 | 200.04 | 15 |
| 950-233 | 3/8" | 48 x 96 | 12 | 32.00 | 384.00 | 15 |
| Chalkboard Foam Boards | | | | | | |
| 950-185 | 3/16" | 20 x 30 | 10 | 4.17 | 41.70 | 40 |
| 950-190 | 3/16" | 24 x 36 | 8 | 6.00 | 48.00 | 60 |
| 950-186 | 3/16" | 40 x 60 | 25 | 16.67 | 416.75 | 15 |
| Dry Erase Foam Boards | | | | | | |
| 950-029 | 3/16" | 20 x 30 | 10 | 4.17 | 41.70 | 40 |
| 905-239 | 3/16" | 40 x 60 | 25 | 16.67 | 416.75 | 15 |
| Extreme White for Photography | | | | | | |
| 905-253 | 3/16" | 48 x 96 | 25 | 32.00 | 800.00 | 15 |
| Mixed Metals – Brushed Aluminum Foam Board | | | | | | |
| 905-300 | 3/16" | 40 x 60 | 25 | 16.67 | 416.75 | 15 |
| 905-301 | 3/16" | 48 x 96 | 25 | 32.00 | 800.00 | 15 |
| Mixed Metals – Brushed Gold Foam Board | | | | | | |
| 905-310 | 3/16" | 40 x 60 | 25 | 16.67 | 416.75 | 15 |
| 905-311 | 3/16" | 48 x 96 | 25 | 32.00 | 800.00 | 15 |



WARNING: EnCore[®] Foam Board is flammable and may constitute a fire hazard if improperly handled. Do not expose to an open flame or other ignition source.

Elmer's makes no warranty of any kind, expressed or implied, as to merchantability, fitness for a particular purpose, or any other manner with respect to EnCore[®] Fine Art Boards.