

# Wet Rated Batten LED Luminaire

## LED Lighting System

GEWZXXYYBAT

\*Key for XX: 12 = 12 in, 24 = 24 in, 48 = 48 in, 96 = 96 in

\*Key for YY: 30 = 3000K, 35 = 3500K, 40 = 4000K, 50 = 5000K, 71 = 7100K, RD = RED, BL = BLUE

\*Key for Z: M = medium output, H = high output



### BEFORE YOU BEGIN

Read these instructions completely and carefully.

#### WARNING/AVERTISSEMENT

##### RISK OF ELECTRIC SHOCK

- Turn power off before inspection, installation or removal.
- The electrical supply for each luminaire must always be connected to the male connector.

##### RISK OF FIRE

- Follow all NEC and local codes.

##### RISQUES DE DÉCHARGES ÉLECTRIQUES

- Coupez l'alimentation avant l'inspection, l'installation ou le déplacement.
- L'alimentation électrique pour chacun des luminaires doit toujours être branché du côté mâle de la prise.

##### RISQUES D'INCENDIE

- Respectez tous les codes NEC et codes locaux.

### Save These Instructions

- The light source of this luminaire is not replaceable; when the light source reaches its end of life the whole luminaire shall be replaced.
- If the external flexible cable or cord of this luminaire is damaged, it shall be replaced by a special cord or cord exclusively available from the manufacturer or his service agent.

### Prepare Electrical Wiring



#### Electrical Requirements

- Suitable for wet locations.
- Follow all National Electric Codes (NEC) and local codes.

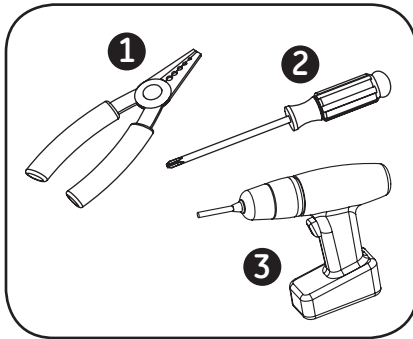
This device complies with Part 15 of the FCC Rules. Operation is subject to the following two conditions: (1) This device may not cause harmful interference, and (2) this device must accept any interference received, including interference that may cause undesired operation. CAN ICES-3 (A)/NMB-3(A)

**Note:** This equipment has been tested and found to comply with the limits for a Class A digital device, pursuant to part 15 of the FCC Rules. These limits are designed to provide reasonable protection against harmful interference when the equipment is operated in a commercial environment. This equipment generates, uses, and can radiate radio frequency energy and, if not installed and used in accordance with the instruction manual, may cause harmful interference to radio communications. Operation of this equipment in a residential area is likely to cause harmful interference in which case the user will be required to correct the interference at his own expense.



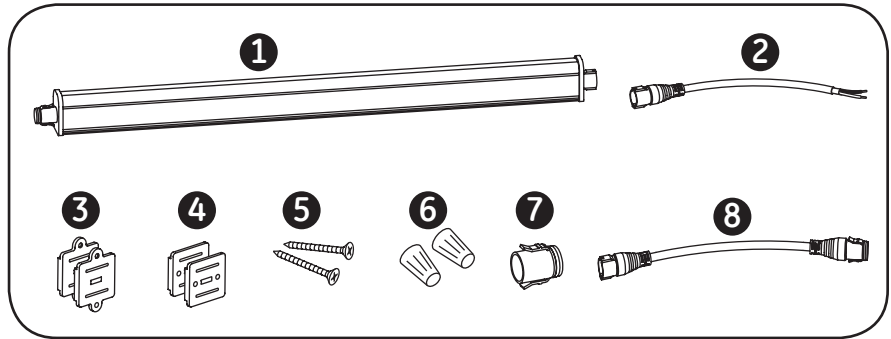
imagination at work

## Tools Required



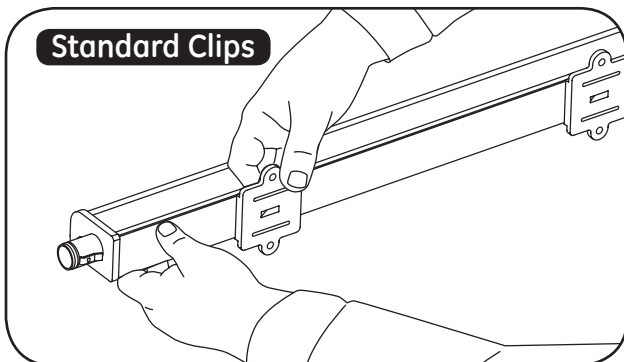
- 1 Wire stripper/cutter
- 2 Screwdriver
- 3 Cordless drill with driver bit

## Components Required

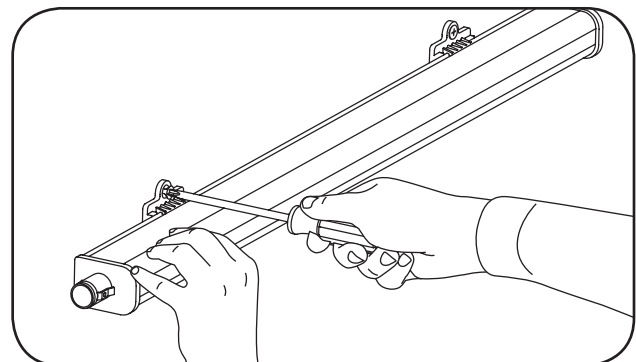


- 1 GE LED Batten fixtures
- 2 Leader cable (96440)
- 3 Standard mounting clips (88818)
- 4 Slim mounting clips (10734)
- 5 #10 (M5) self-tapping flathead screws
- 6 UL approved 18-14 AWG (0.82-2.08 mm<sup>2</sup>) wire connectors or in-line splice connectors
- 7 End cap for connectors
- 8 **Optional:** Jumper cable (96441: 24 in./610 mm long)

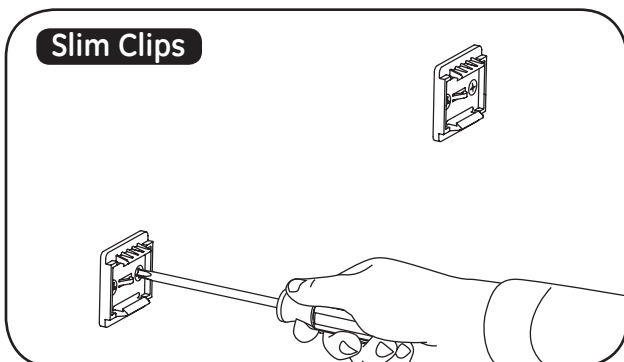
## Installation



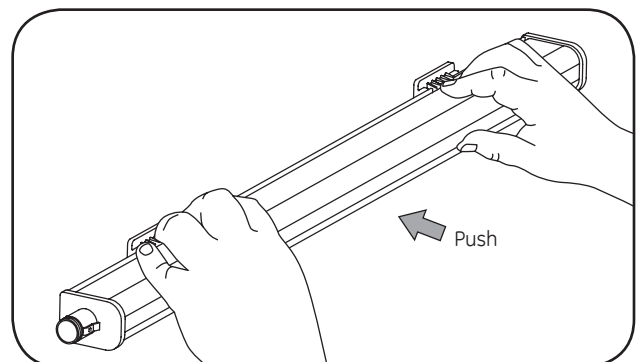
- 1A** Assemble the LED fixture by pressing the mounting clips onto the LED Batten. A snapping noise should be heard. Refer to Specifications table on page 5 for required number of mounting clips.



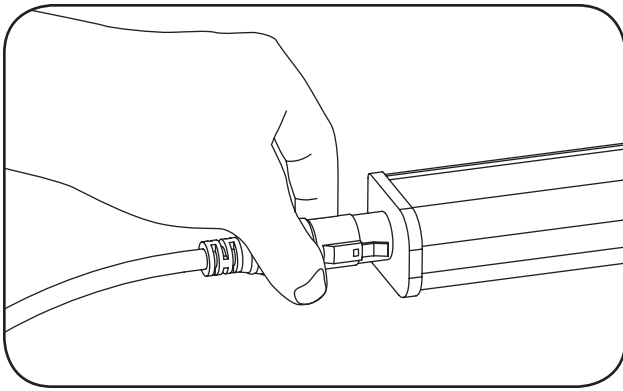
- 2A** Mount the fixture to the desired ceiling/wall using two #10 (M5) self-tapping flathead screws in each mounting clip.



- 1B** Mount each slim clip to the desired ceiling/wall using two #10 (M5) self-tapping flathead screws. Refer to Specifications table on page 5 for required number of mounting clips.



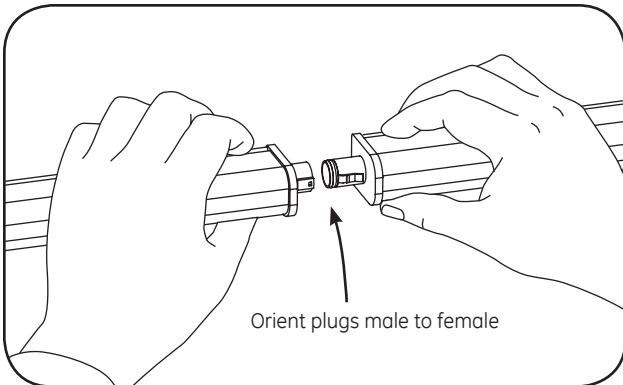
- 2B** Assemble the LED fixture by pressing the LED Batten into the clips. A snapping noise should be heard.



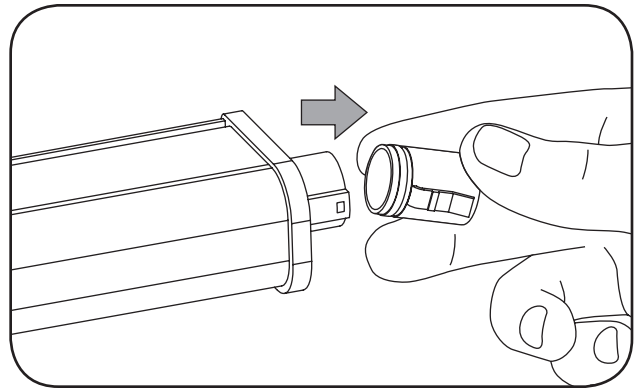
- 3** Connect the leader cable to the male plug on the first LED fixture. Two clicking noises should be heard.

**! WARNING**

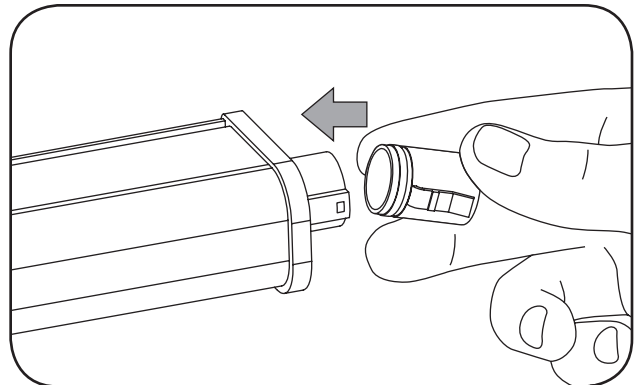
The electrical supply for each luminaire must always be connected to the male connector.



- 5** Continue placing fixtures, being sure to join plugs male to female. Attach jumper cables as needed to work around any obstacles, corners or separations.

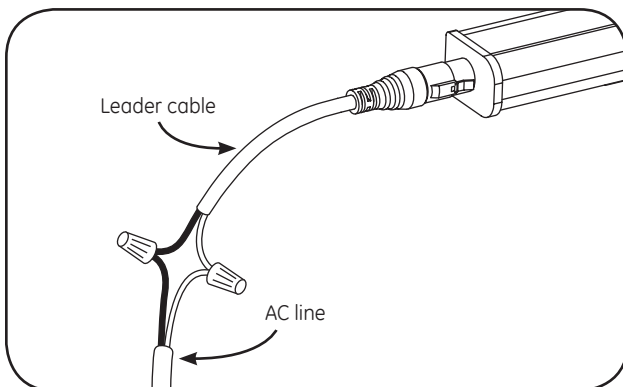


- 4** Remove endcap from other side.

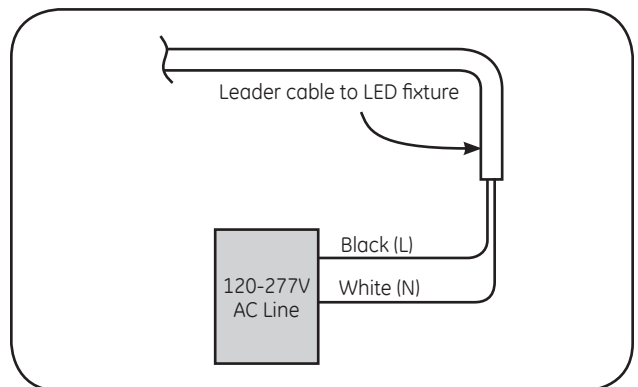


- 6** Place end cap from Step 4 on the electrical plug of the last fixture in the run.

## Electrical Connections

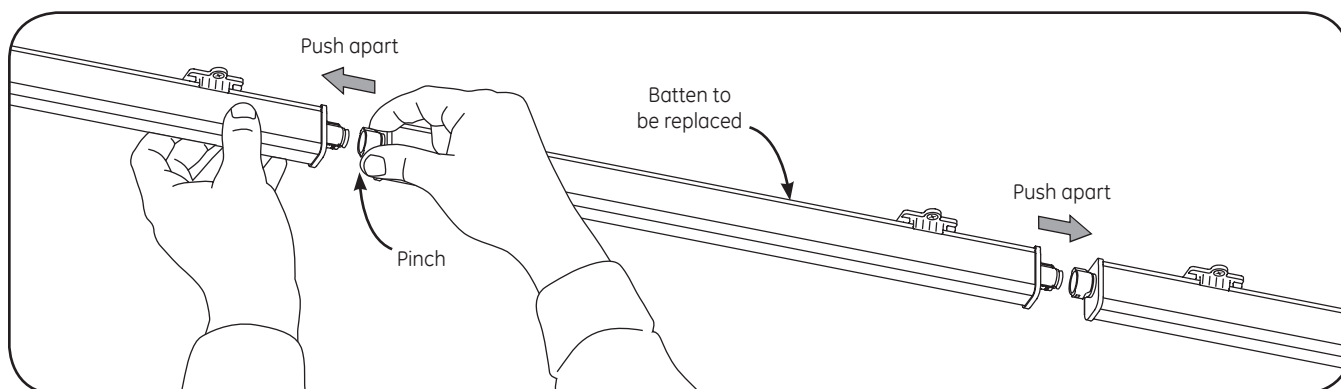


- 7** Connect the black (line) and white (neutral) wires of the AC line to the similarly colored wires of the leader cable using wire nuts.



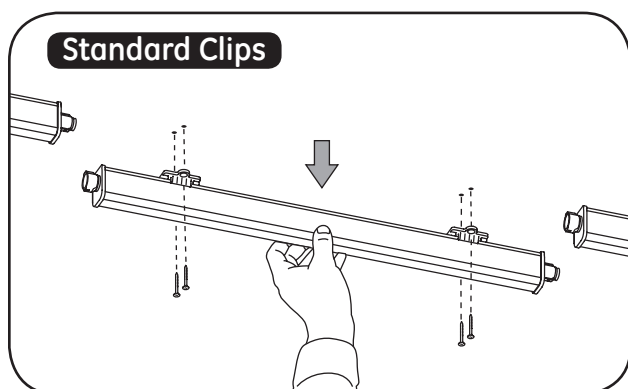
- 8** Wiring diagram.

## Batten Replacement Instructions

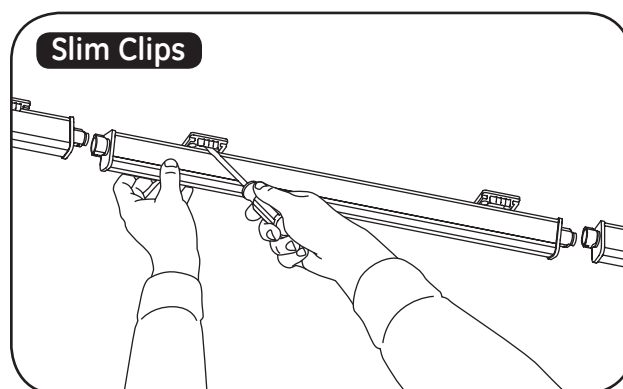


- 1** Unclip plugs on both sides of the Batten to be replaced. Push apart Battsens on either side.

**TIP:** Pinch the ends of the plug while pulling the receptacle end away.



- 2A** Unscrew the mounting clips to completely remove the Batten.



- 2B** Using a screwdriver, gently pry the Batten out of the mounting clips.

- 3** To insert new Batten, complete the steps in reverse order.

## Troubleshooting

Symptom	Solution
All LED fixtures are not illuminated	<ul style="list-style-type: none"><li>• Check leader cable connection and/or check circuit breaker.</li><li>• Check plug connectors on the LED fixtures for improper connections or short circuits.</li><li>• Ensure leader cable is securely connected to the female plug connector on the first LED fixture.</li></ul>
Some LED fixtures are not illuminated	<ul style="list-style-type: none"><li>• Check plug connectors on the LED fixtures for improper connections or short circuits.</li><li>• Ensure any jumper cables are securely connected between the male/female plug connectors of the LED fixtures.</li></ul>

## Specifications

Product Code	Description Code	Pkg Description	Maximum Run Length	Voltage	Number of Mounting Clips
93024679	GEWM1235BAT	12" 3500K LED Fixtures	For 120 VAC: 40 fixtures (40 feet/ 12 meters) For 240 and 277 VAC: 80 fixtures (80 feet/ 24 meters)	120-277VAC, 50/60Hz	2
93024680	GEWH1235BAT	12" 3500K LED Fixtures-HO	For 120 VAC: 30 fixtures (30 feet/ 9 meters) For 240 and 277 VAC: 56 fixtures (56 feet/ 17 meters)		
82349	GEWM2430BAT	24" 3000K LED Fixtures	For 120 VAC: 20 fixtures (40 feet/ 12 meters) For 240 and 277 VAC: 40 fixtures (80 feet/ 24 meters)	120-277VAC, 50/60Hz	2
93027304	GEWM2435BAT	24" 3500K LED Fixtures			
82351	GEWM2440BAT	24" 4000K LED Fixtures			
82355	GEWM2450BAT	24" 5000K LED Fixtures			
82356	GEWM2471BAT	24" 7100K LED Fixtures			
82446	GEWH2430BAT	24" 3000K LED Fixtures-HO	For 120 VAC: 15 fixtures (30 feet/ 9 meters) For 240 and 277 VAC: 28 fixtures (56 feet/ 17 meters)		
82461	GEWH2440BAT	24" 4000K LED Fixtures-HO			
82521	GEWH2450BAT	24" 5000K LED Fixtures-HO			
82536	GEWH2471BAT	24" 7100K LED Fixtures-HO			
93025123	GEWH24RDBAT	24" Red LED Fixtures-HO			
93025127	GEWH24BLBAT	24" Blue LED Fixtures-HO	For 120 VAC: 10 fixtures (40 feet/ 12 meters) For 240 and 277 VAC: 20 fixtures (80 feet/ 24 meters)		
82358	GEWM4830BAT	48" 3000K LED Fixtures			
93025121	GEWM4835BAT	48" 3500K LED Fixtures			
82360	GEWM4840BAT	48" 4000K LED Fixtures			
82361	GEWM4850BAT	48" 5000K LED Fixtures			
82365	GEWM4871BAT	48" 7100K LED Fixtures	For 120 VAC: 7 fixtures (30 feet/ 9 meters) For 240 and 277 VAC: 14 fixtures (56 feet/ 17 meters)		
82551	GEWH4830BAT	48" 3000K LED Fixtures-HO			
93025122	GEWH4835BAT	48" 3500K LED Fixtures-HO			
82581	GEWH4840BAT	48" 4000K LED Fixtures-HO			
82596	GEWH4850BAT	48" 5000K LED Fixtures-HO			
82776	GEWH4871BAT	48" 7100K LED Fixtures-HO	For 120 VAC: 5 fixtures (40 feet/ 12 meters) For 240 and 277 VAC: 10 fixtures (80 feet/ 24 meters)		
93025124	GEWH48RDBAT	48" Red LED Fixtures-HO			
93025126	GEWH48BLBAT	48" Blue LED Fixtures-HO			
82366	GEWM9630BAT	96" 3000K LED Fixtures			
82367	GEWM9640BAT	96" 4000K LED Fixtures			
82374	GEWM9650BAT	96" 5000K LED Fixtures	For 120 VAC: 3 fixtures (30 feet/ 9 meters) For 240 and 277 VAC: 7 fixtures (56 feet/ 17 meters)		
82416	GEWM9671BAT	96" 7100K LED Fixtures			
83086	GEWH9630BAT	96" 3000K LED Fixtures-HO			
83121	GEWH9640BAT	96" 4000K LED Fixtures-HO			
83166	GEWH9650BAT	96" 5000K LED Fixtures-HO			
83211	GEWH9671BAT	96" 7100K LED Fixtures-HO			
93025125	GEWH96RDBAT	96" Red LED Fixtures-HO			

## Specifications

Batten Length	Input Voltage	Typical Current (A)			
		White MO	White HO	Red HO	Blue HO
12"	120V	0.04	0.07	—	—
	240V	0.034	0.04	—	—
	277V	0.023	0.037	—	—
24"	120V	0.075	0.125	0.065	0.075
	240V	0.05	0.075	0.039	0.05
	277V	0.05	0.075	0.035	0.045
48"	120V	0.15	0.25	0.125	0.143
	240V	0.1	0.15	0.08	0.08
	277V	0.075	0.15	0.064	0.07
96"	120V	0.3	0.5	0.27	—
	240V	0.175	0.3	0.14	—
	277V	0.15	0.275	0.126	—



Electrical products must not be thrown out with domestic waste. They must be taken to a communal collecting point for environmentally friendly disposal in accordance with local regulations. Contact your local authorities or stockist for advice on recycling. The packaging material is recyclable. Dispose of the packaging in an environmentally friendly manner and make it available for the recyclable material collection-service.

Conforms to the following standards:  
IP66 rated



CLASS II LUMINAIRES



[www.gelighting.com](http://www.gelighting.com)

GE and the GE Monogram are trademarks of the General Electric Company. All other trademarks are the property of their respective owners. Information provided is subject to change without notice. All values are design or typical values when measured under laboratory conditions. GE Lighting is a business of the General Electric Company. © 2016 GE.

GE2027-7286 (Rev 10/21/16)  
SIGN153