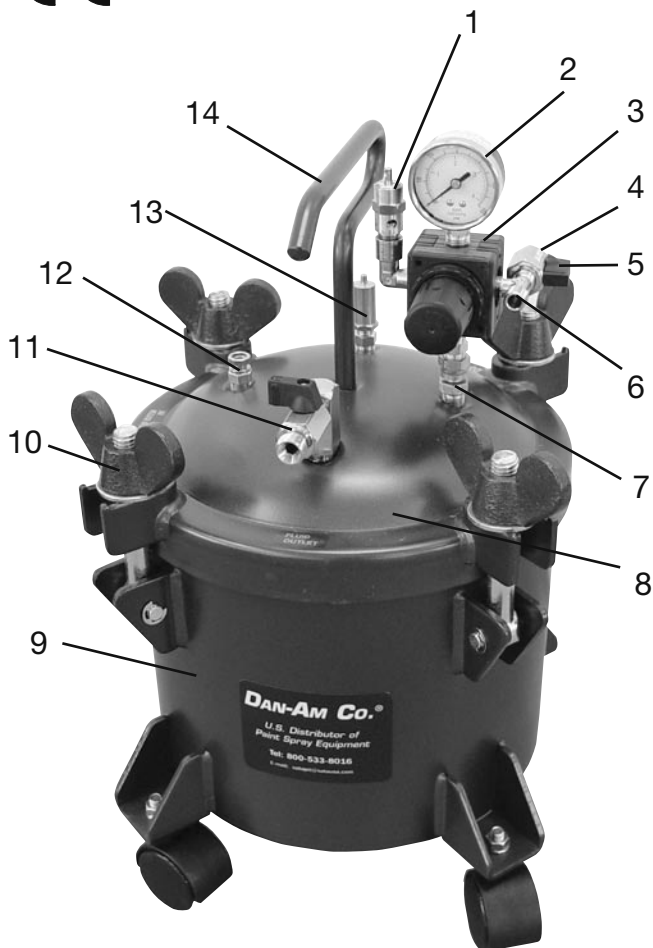


# Dan-Am 10 Liter / 2.5 gallon Pressure Pot Operating Instructions

*Engineered and assembled by Dan-Am Co.*

Prior to putting the unit/spray gun into operation, read the operating instructions completely and thoroughly. The stipulations contained therein are to be respected in all cases. In addition, the operating instructions are to be stored in a safe place, accessible for every user of the equipment. The unit/spray gun may only be put into operation by persons familiar with its use (professionals). Inappropriate use of the unit / spray gun, modification of any kind or combination with inappropriate other parts may cause material damage, serious hazard to the user(s), other person(s) or animal(s) health or even death (e.g. failure to respect the stipulations laid out in the operating instructions) for which Dan-Am Co. shall not take any responsibility. The applicable safety, workplace and worker health protection regulations of the respective country or area/district in which the system/the spray gun is used are to be respected in all cases.



- |   |   |
|---|---|
| 1. Primary over pressure release valve        | 7. Back-check valve                       |
| 2. Pressure gauge                             | 8. Lid, complete                          |
| 3. Pressure regulator                         | 9. Pressurized container                  |
| 4. Air connection to air supply (not visible) | 10. Wing nut tighteners                   |
| 5. Ball tap                                   | 11. Material outlet                       |
| 6. Air connection to spray gun                | 12. Pressure release valve                |
|   | 13. Secondary over pressure release valve |
|   | 14. Carrying handle                       |

## **Technical Data:**

Material Capacity: Approx. 10 Liters or 2.5 Gallons

Maximum Operating Pressure: 80 psi, to ensure safety the pressure regulator has been fitted with a 60 psi over pressure release valve (ref #1). A secondary over pressure valve is installed in the lid of the pressure pot (ref#13).

Material Hose: 1/4" ID Standard (1/4" – 3/8" ID recommended)

Air Hose: 3/8" ID Standard (5/16 – 3/8" ID recommended)

Hose Length: Available in 12', 25', 35' and 50' combinations

Fluid pressure gauge: 60 psi (ref #2)

Air pressure gauge (dual regulator assembly only): 100 psi

Air line connection: 1/4" (ref #4 & #6)

Fluid line connection: 3/8" (ref #11)

Weight (empty/single reg): 26lbs Standard, 30lbs manual stirrer, 33lbs air agitation

Maximum operating temperature: 120 degrees F / 50 degrees C

## **1.General Operations**

Dan-Am pressure tanks are preferably used when a substantial quantity of a specific coating is applied. Working with paint pressure tanks offers a number of distinct advantages:

- continuous work without interruption
- steady / consistent material supply
- low material waste
- flexibility in spray gun handling

## **2.Putting into Operation:**

**2.1** Prior to putting the system into operation please read and understand the operating instructions completely. Ensure tight fit of all screws, nuts and connections before proceeding.

- Connect fluid line to 3/8" material outlet valve (ref. #11) while connecting the opposite end to the spray gun
- Connect air line to the 1/4" air outlet (ref. #6) while connecting the opposite end to the spray gun
- Ensure that the air regulator is in the full **off** position (counter-clockwise) and air inlet ball valve is **closed** (ref. #5)
- Fill pressure tank and secure tightly with wing nut tighteners (ref. #10)
- Connect compressed air supply line to the 1/4" air inlet fitting (ref. #4)

## **2.2 Adjusting / Setting Pressures**

Adjust atomizing air to the spray gun. Open the air inlet valve allowing air to the regulator and spray gun. (NOTE: Single and dual regulator assemblies are available, spray air must be adjusted either at the spray gun or secondary regulator at the pressure pot (dual regulators only). Pressure should be adjusted to the recommendations particular to each spray gun.

Jet K/3 HVLP: 36 psi

Jet K/3 RP: 36-43 psi

LM 2000 K/HVLP: 43 psi

LM 2000 K/RP: 43 psi

### 2.3 Adjusting Material Pressure

Desired fluid pressures can be adjusted at the regulator but turning the knob clockwise. (pull the regulator knob out, make any adjustments and lock in place by pushing in) The adjusted pot pressure will be visible on the gauge fixed to the top of the regulator. Suggested material pressures will be specific to the coating characteristics and viscosity. Standard fluid delivery pressures range from 7-25 psi, adjust this pressure to achieve desired atomization and application speed. Taking these points into consideration, choosing lower fluid pressures should make material atomization easier and provide less overspray.

### 2.4 refilling

- Close valve at the air inlet (ref. #5)
- Turn regulator knob counter-clockwise to the off position
- Open pressure relief valve at the top of the pressure tank (ref. #12)
- Once pressure is relieved, close pressure relief valve
- Open wing nuts, remove lid and refill
- Replace lid ensuring tight seal by tightening wing nut
- Open air inlet valve (ref. #5)
- Adjust regulator knob to desired fluid pressure and lock into position

### 3. Cleaning

Follow shut down procedures as outlined in section 2.4. Once depressurized, remove any remaining material if necessary. Clean all parts having been in contact with the coating, paint tube, agitator, etc. Fill with solvent, thinner or cleaning agent recommended by the coating manufacturer and close tank. Shut off atomization air to the spray gun and remove the air cap. Adjust pot pressure to achieve material flow, allow coating/contaminated solvent to flow through the system until clean solvent/agent is delivered through the spray gun. Collect/Discard solvent and coatings in approved containers in accordance to local rules.

When the pressure tank has been cleaned and not in use for a period of time, the lid should not be closed tightly to prevent accumulation of solvent fumes .

### 4. Safety

- DO NOT EXCEED THE PERMISSIBLE OPERATING PRESSURE OF THE PRESSURE TANK.
- PRESSURE IN THE AIRLINE SHOULD NOT EXCEED 1.5 TIMES THE MAXIMUM OPERATING PRESSURE OF THE TANK.
- VENTILATE THE SAFETY VALVE TO CHECK FOR PROPER FUNCTIONING MAKING SURE THAT IT IS NOT STUCK OR CLOGGED.
- DO NOT CARRY OUT ANY REPAIR OR SERVICING WHILE THE TANK IS PRESSURIZED.
- ALWAYS TAKE APPROPRIATE SAFETY MEASURES, WEARING NECESSARY GLOVES, EYE PROTECTION, BREATHING EQUIPMENT OR ANY OTHER PERSONAL PROTECTIVE EQUIPMENT.

### Warranty

During the period of six (6) months from the date of original purchase Dan-AM will repair or, replace the product without charge for parts or labor subject to the following conditions.

The warranty covers the value for production parts or defects in material during the warranty period. The warranty does not include damages caused by improper handling, normal wear and tear, mechanical damages, faulty assembly, improper maintenance, unusual spray materials substitute materials, chemicals such as alkaline solutions and acids, electro-chemical or electric influences, to the extent this damage is not the result of any error committed by us.

Abrasive spray material such as red lead and liquid grinding material etc., reduce the lifetime of valves, packings, guns and nozzles. Wear and tear damage caused by this are not covered in this warranty.

Units should be inspected upon delivery by the consumer. Obvious damage must be reported within 14 days of receipt of the unit to the supplier to avoid loss of the right to claim notice of defects.

Additional claims such as compensation are excluded. This refers as well to damages caused during meetings , training sessions, or demonstrations.

Should the consumer require immediate repair or replacement before a determination of whether the affected unit is covered by the warranty, the repair or the replacement will be made and charged at the current prices. If it is determined that the item is covered by the warranty, a credit will be issued for the repair or replacement.

Replaced parts become the property of Dan-Am Co. or their distributor.

Notice of defects or other claims do not entitle the consumer to delay or refuse payment.

Returned merchandise to Dan-Am Co. must be sent prepaid. All service charges, freight and handling charges are to be paid by the consumer. The charges made will be in accordance with current pricing. Suretyships may not prolong the warranty period. This warranty terminates upon unauthorized inference.

### Warning:

Never heat appliance to more than 120° F, 50° C, as non-permissible pressure rise may occur in the container. Protect container from extreme heat radiation. Never aim spray guns at yourself, people or animals. Solvents and thinners can cause injury. Only the respective quantities of solvents and paints required for work progress may be present in the direct surroundings of the unit and are to be returned after work to their assigned storage rooms. Prior to any repair work the unit must always be disconnected from air pressure. During painting, no open fire, lit cigarettes, non-explosion proof bulbs etc., must exist since combustible fumes are present. During painting, breathing masks conforming to regulations must be worn for health protection. When using the spray gun no vibrations are transmitted to the painter. Low recoil. Appropriate ear protection muffs may be required, as permissible sound levels may be exceeded when painting with very high air pressures.

### Caution!

When using solvents and cleaning agents based on halogenated hydrocarbons e.g. 1.1.1-trichlorethylene and methylene chloride, chemical reactions can occur on the aluminium cup, gun and on galvanized components (small quantities of water added to 1.1.1-trichlorethylene produce hydrochloric acid). This can cause oxidation of the components; in extreme cases, the reaction can be explosive. Therefore only use solvents and cleaning agents for your paint gun that do not contain the substances named above. You must never use acid, alkaline solutions / lye or stripping agents for cleaning.

# Dan-Am Co.®

Exclusive Independent Nationwide  
Distributor of SATA Products


One Sata Drive  
Spring Valley, MN 55975  
Tel. 800-533-8016  
Fax. 800-633-7282  
E-mail: [satajet@satausa.com](mailto:satajet@satausa.com)  
[www.satausa.com](http://www.satausa.com)

# SATA

## Spray Equipment

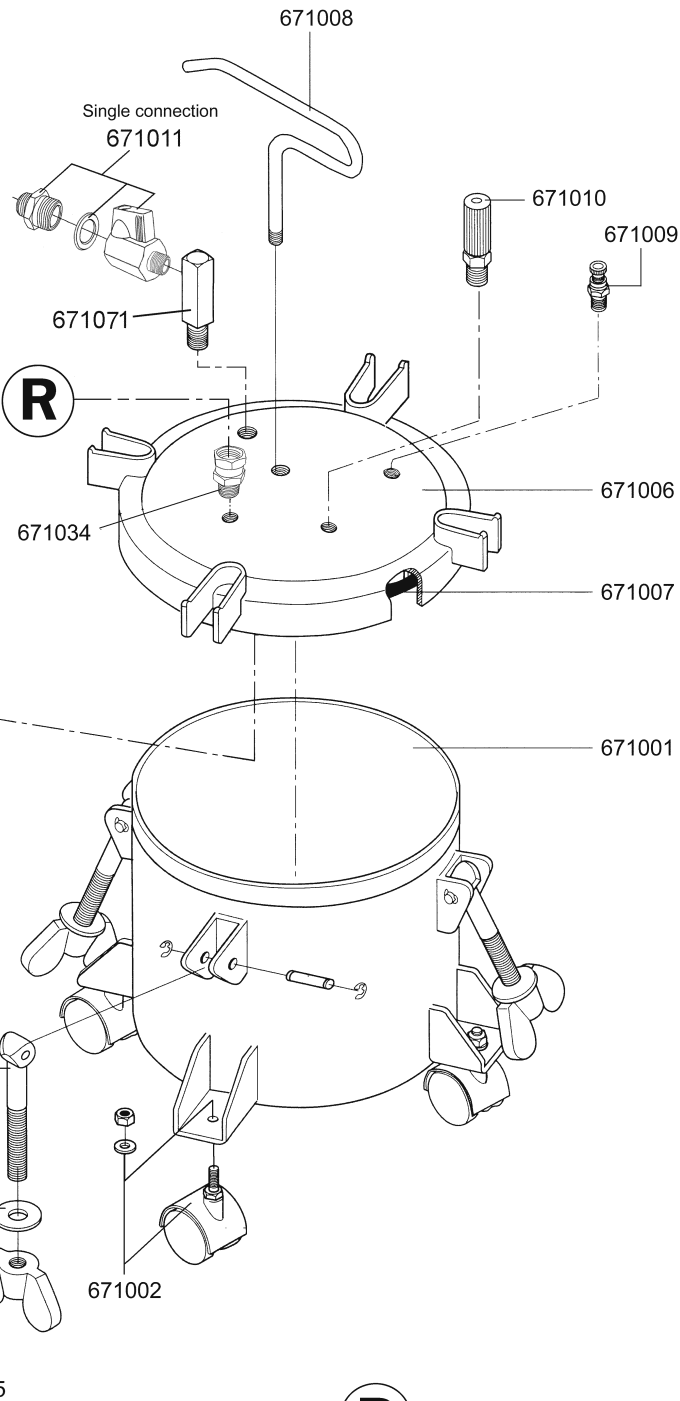
# Dan-Am 10-Liter Pressure Tank

Complete 10-Liter without Agitator, Single Pressure Regulator.....	Order No. 671100
Complete 10-Liter without Agitator, Double Pressure Regulator .....	Order No. 681100
Complete 10-Liter with Manual Agitator and Single Pressure Regulator.....	Order No. 671200
Complete 10-Liter with Manual Agitator and Double Pressure Regulator .....	Order No. 681200
Complete 10-Liter with Pneumatic Agitator and Single Pressure Regulator .....	Order No. 671300
Complete 10-Liter with Pneumatic Agitator and Double Pressure Regulator.....	Order No. 681300



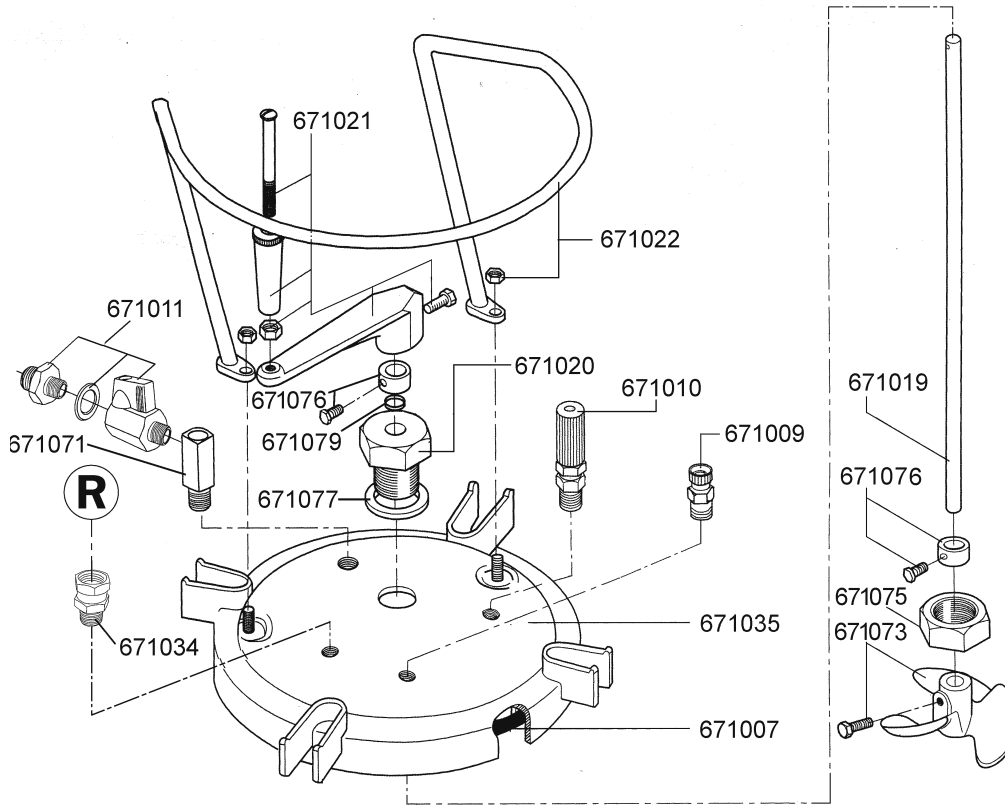
10L disposable liners

671012 Pk of 12  
671060 Pk of 60



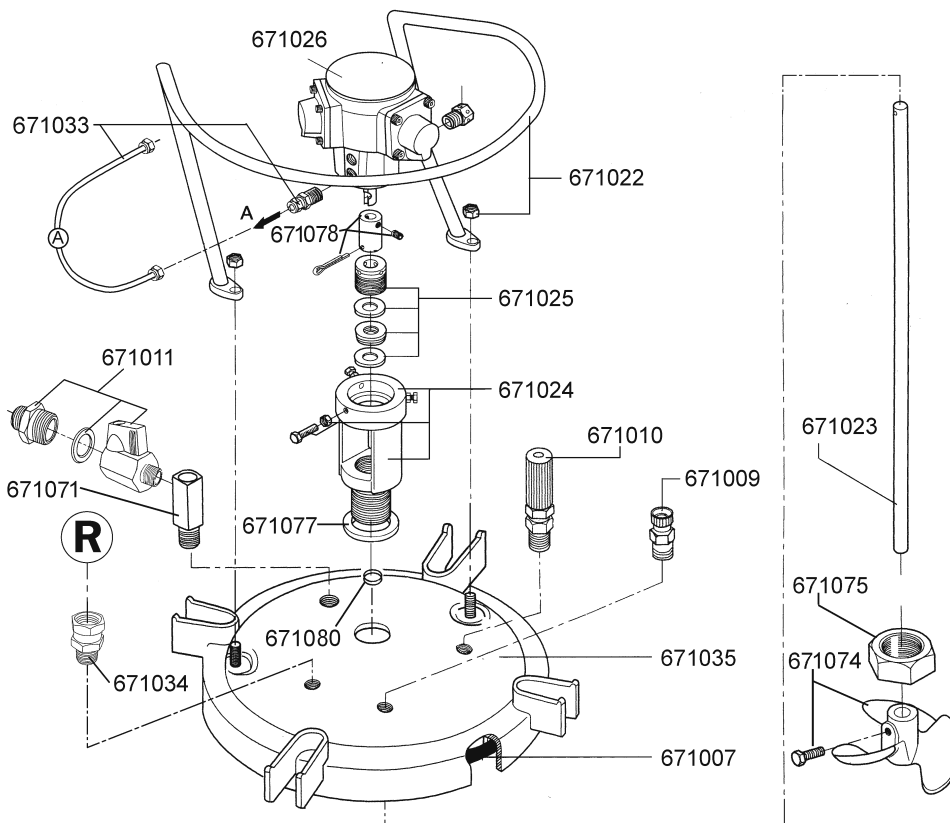
**R** = Regulator

## Manual Crank Agitator Version



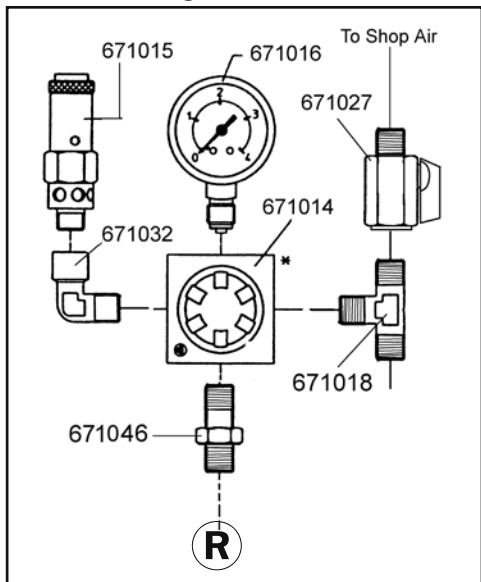
Part #	Description
671007	Lid gasket
671009	Pressure relief valve
671010	Secondary over pressure release valve
671011	Fluid valve assembly
671019	Manual agitator shaft
671020	Manual crank base
671021	Manual crank handle assembly
671022	Parts guard assembly
671023	Pneumatic agitator shaft
371024	Motor base assembly
671025	Connecting bushing assembly
671026	Air motor
671033	Agitator air line assembly
671034	Swivel connector, male/female
671035	Tank lid
671071	Fluid outlet
671073	Manual agitator propeller w/bolt
671074	Pneumatic agitator propeller w/bolt
671075	Agitator base nut
671076	Manual agitator shaft lock collar w/bolt
671077	Agitator base gaskets
671078	Pneumatic agitator shaft lock collar assembly
671079	Manual agitator base O-ring (pack of 2)
671080	Pneumatic agitator base O-ring (pack of 2)

## Pneumatic Air Agitator Version



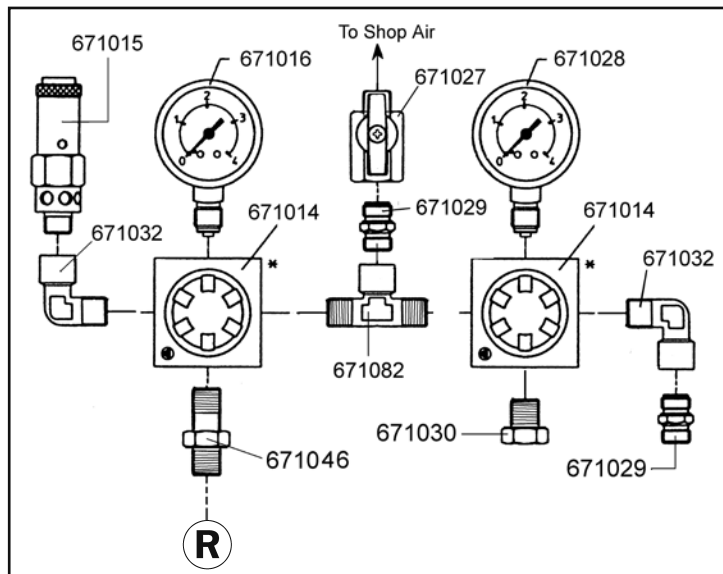
**(R)** = Regulator

## Dan-Am Single Pressure Regulator 671037



Part #	Description
671037	Single pressure regulator assembly
671038	Single pressure regulator assembly, pneumatic agitator
671039	Double pressure regulator assembly
671040	Double pressure regulator assembly pneumatic agitator
671014	Pressure regulator
671015	Primary relief valve
671016	Pressure gauge, 0-60 psi
671018	"T" Fitting

## Dan-Am Double Pressure Regulator 671039

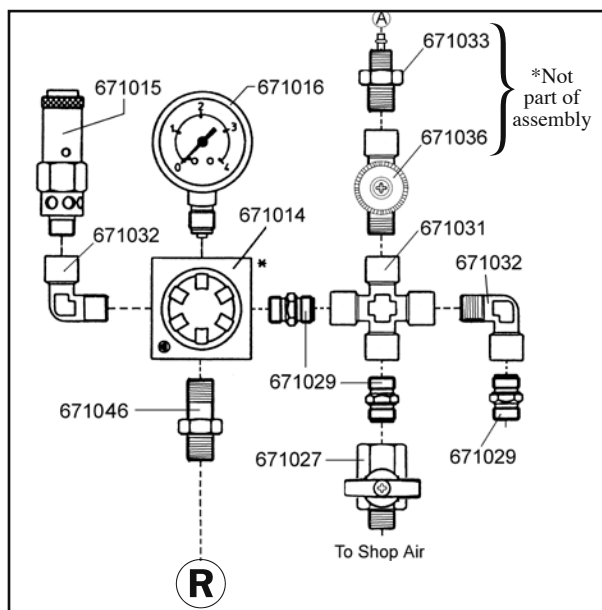


Part #	Description
671027	Ball valve
671028	Pressure Gauge, 0 – 100 psi
671029	Nipple, 1/4 x 1/4 Male
671030	Plug, 1/4 Male
671031	4 way fitting, 1/4
671032	Elbow Fitting, 1/4
671033	Agitator air line assembly (includes hose and fasteners)
671036	Agitator shut off valve
671046	Check valve
671082	"T" Fitting

**(R)** = To lid connection

**(A)** = To agitator air line

## Dan-Am Single Pressure Regulator 671038 Pneumatic Agitator



## Dan-Am Single Pressure Regulator 671040 Pneumatic Agitator

