

Wind Sign II & Wind Sign Deluxe

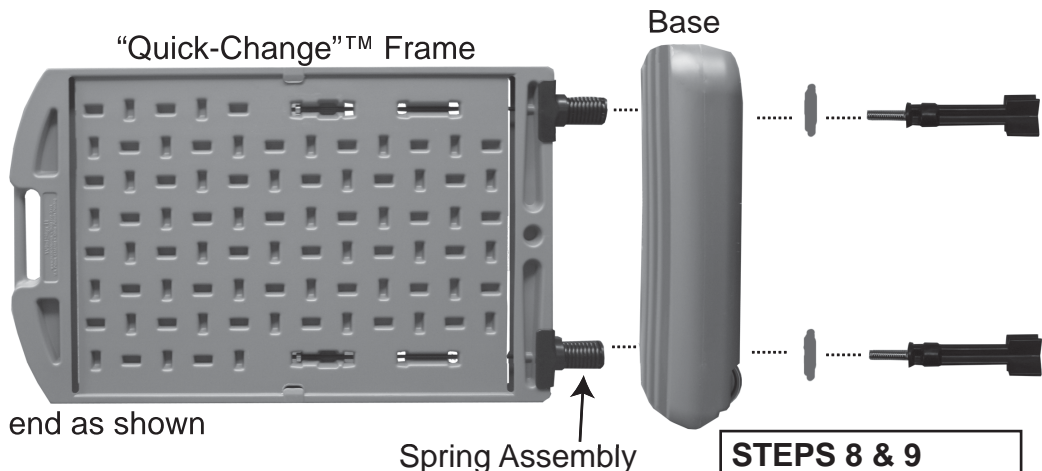
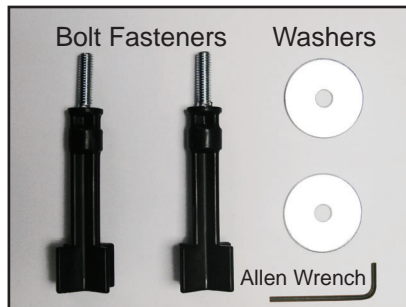


www.plasticade.com

"Quick-Change"™ Frame Assembly Instructions

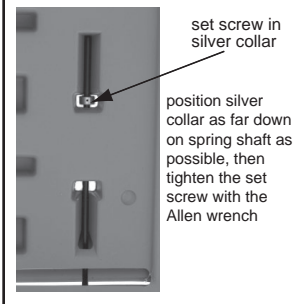
See Reverse Side for
Snap Frame Instructions

Hardware Provided



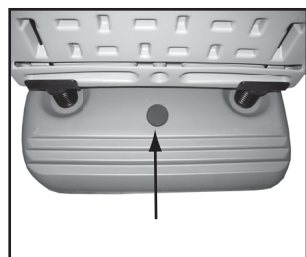
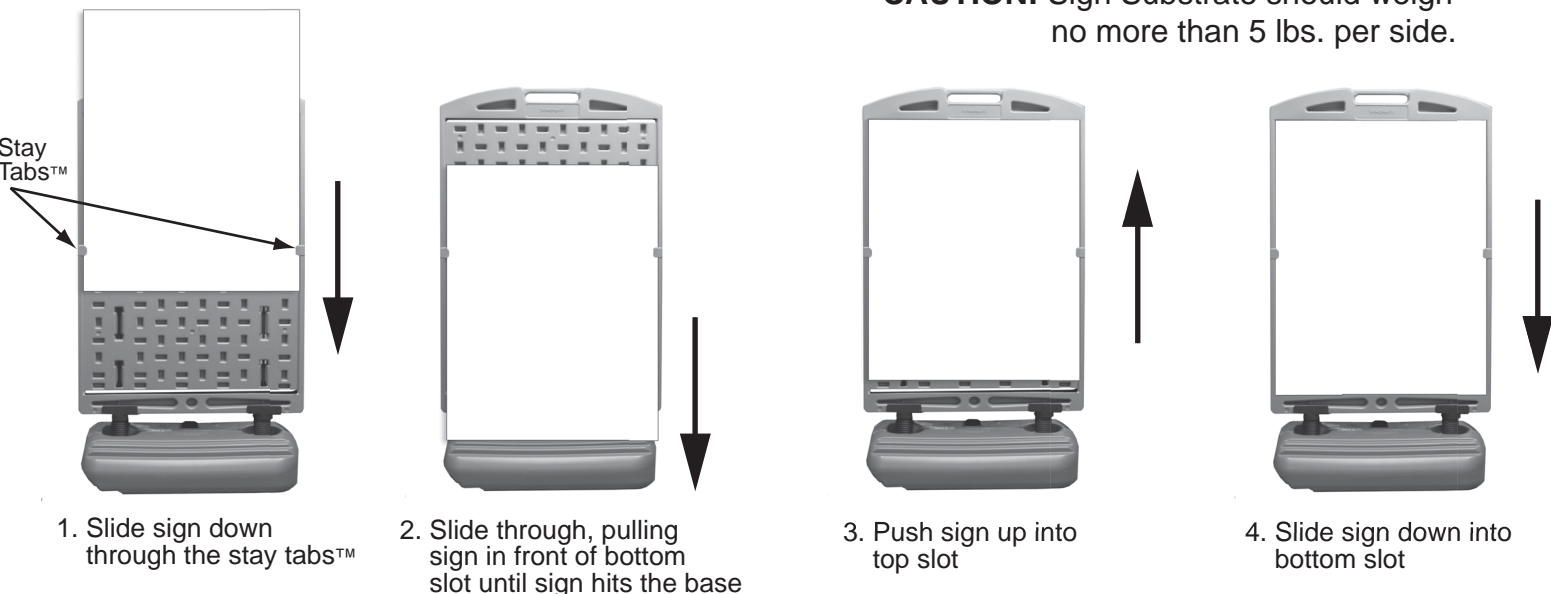
1. Lay frame on its side and base on end as shown
2. Place washer on bolt fastener
3. Insert bolt fastener through hole in bottom of base
4. Align spring assembly with bolt fastener
5. Screw bolt fastener into bottom of corresponding spring assembly, tighten
6. Repeat for second bolt fastener, washer, and spring assembly
7. Turn sign frame upright, with base flat on the ground
8. Take Allen wrench and tighten set screw inside silver collar on spring shaft, *silver collar should be placed at the lowest possible position on the spring shaft at the bottom of the opening*
9. Repeat for second set screw in silver collar

STEPS 8 & 9



Sign Insertion Instructions

CAUTION: Sign Substrate should weigh no more than 5 lbs. per side.



Unscrew cap from fill hole and pour dry sand into base.

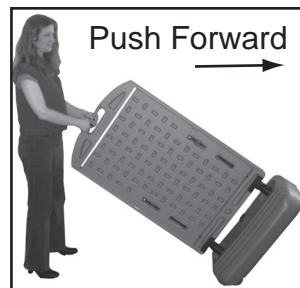
Fill with up to 115 lbs. of sand to achieve desired wind resistance. Sand should be level inside of base to maintain optimum balance. Shake gently to level sand.

Wind Sign Deluxe
"Quick-Change" Frame

Pounds of Ballast	Head-on Wind Resistance
70 lbs.	40 mph
100 lbs.	45 mph
115 lbs.	50 mph

Wind Sign II
"Quick-Change" Frame

Pounds of Ballast	Head-on Wind Resistance
70 lbs.	40 mph
100 lbs.	55 mph
115 lbs.	60 mph



To move sign stand from place to place - grab handle, tilt stand back on wheels, and push sign to move it